

The Cloverleaf Project



NEWSletter
August 2017



In this issue:

- ▶ *Chairman and Secretary's Report*
- ▶ *Cloverleaf update*
- ▶ *Upcoming Events*
- ▶ *Christmas in July*
- ▶ *Our Supporters & Sponsors*
- ▶ *Membership form*

Chairman and Secretary's Report

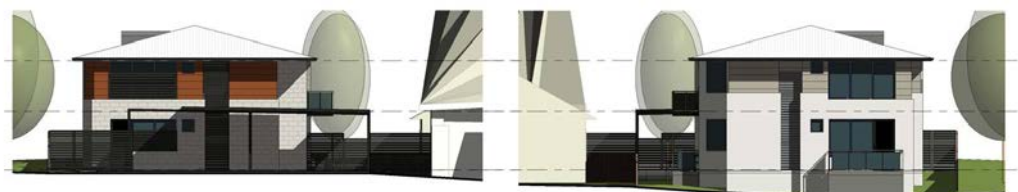
The freedom to choose where you live and with whom you live belongs to all Australians. As the Peninsula transitions to the NDIS in 2018, CLA needs the Federal Government to consider the possible implications for children of ageing parents/carers.

Our aging population on the Peninsula is an urgent reminder, of the need to provide sustainable supported accommodation for adults with a disability both now and into the future.

Cloverleaf is an option allowing ageing parents a planned transition into care for their person while the parent is still alive. This allows peace of mind to the carer, who would otherwise

be living in fear of what would happen to their child when they die, or are no longer able to care.

The collaborative model like (Cloverleaf) ensures suitable accommodation is able to be constructed, maintained replaced on an ongoing basis. All parents know their person the best; they want their son or daughter to live with their friends, in their local community, near family, day services etc. CLA would like to see National Safeguards policy put in place to make sure people with a disability are safe from neglect and abuse. The NDIA must address the problems in the current system that has let people down.



EAST ELEVATION

WEST ELEVATION

Cloverleaf update

Due to new regulatory requirements for disability accommodation, the design for Cloverleaf had to be revised to meet the design rules for Specialist Disability Accommodation (SDA) for design category fully accessible. Building type, Cloverleaf is classed as an apartment for two residents plus an on-site overnight assistance (OOA) room for a carer. This room is not classed as a bedroom. The bathroom/toilet designs have had to be reviewed as all such rooms have to be fully accessible and have provision for hoists. Dovey and Co (our architects) have done a re-design which will meet all the SDA requirements. En-suits for each resident have been deleted and the accessible bathroom increased in size plus the separate toilet is also fully accessible and hence larger. Each unit will have 2 toilets, but, one shower/bath for the 2 residents. All four units are now fully self-contained for two residents. The new final costings for this design are scheduled from the preferred tenderer by early August.

Interviews with the proposed eight residents are scheduled during August with the planning Manager of Melba Support Services to prepare the input for each individual's support (and accommodation) support packages prior to their interviews with NDIA planners.

The billboard out the front of the Cloverleaf project in Murray Anderson Rd Rosebud was seen by a developer who contacted CLA and showed an interest to provide SDA housing for our members. He has now obtained certification from the NDIA to become an authorised housing provider. We have since held discussions with him regarding the provision of housing in Rosebud for a further 4 of our members.

CLA is looking into providing housing options for our members

Furthermore, we are also engaging with other registered housing providers for the provision of SDA and non SDA housing. In regard to this we have been in contact with State and Federal Governments re the availability of suitable land on the peninsula. We are in discussions with Minister Foleys office (State) and executives from DHHS on pre-planning for the NDIS coming to the Peninsula in June 2018.

These discussions are vital in order that we can find a solution to overcome the looming crisis of housing for non SDA people (94%) with moderate to mild disability who in our opinion will still require a level of on-site support.

CLA is very grateful for the continued support of the Southern Mornington Peninsula Uniting Church, Minister Chris Menielly, church council and congregation.

Carers Victoria Submission

Carers Victoria released a submission on the 'Rights in Specialist Disability Accommodation (SDA)' in July. This submission discusses and makes recommendations to the Government on the transition of Victorian supported accommodation to the NDIS, via Specialist Disability Accommodation (SDA), which represents a fundamental shift in the way in which people with disability, who have an extreme functional impairment, or high support needs, will have their accommodation needs met. *Extract taken from Carers Victoria's submission Consultation Paper July 2017 12.*

Personnel New Faces

CLA welcomes **Betty Bourke** to our board, her background in nursing and her knowledge of disability will be an asset to CLA.



We also welcome **Gwen Giudici** to our ranks. Gwen has been employed as our media and marketing person. Gwen will provide support not only to the Board but also directly to our fundraising Group.



Conclusion

There is a risk during this period of major reform and transition to SDA under the NDIS that the rights and needs of people with disability who live in Victorian supported accommodation and their carers will not be prioritised, awaiting solutions provided by NDIS.

Article 19 (a) of the United Nations Convention on the Rights of Peoples with Disabilities applies now. That is, people with disability have the opportunity to choose their place of residence and where and with whom they live on an equal basis with others and are not obliged to live in a particular living arrangement. With this in mind, the Victorian Government should do all it can to inform, people with disability and their carers of their individual circumstances amidst the reforms, understand their needs and work with the NDIA to implement their housing choices. The Victorian Government should amend the Residential Tenancies Act, to complement the NDIS and safeguard the rights of SDA tenants. We don't want an NDIS that inherits the problems, or loses existing safeguards, associated with the Victorian system.

There is also the risk of the Victorian Government stepping aside post-transition, leaving SDA to the multiple and various stakeholders involved in the separation of accommodation and support to do their jobs effectively. However, as is known from past experience, people and organisations do not always do what they should. Carers Victoria believes the Victorian Government must exceed the minimum safeguards built into the NDIS to oversee the inherently complex array of arrangements to ensure people living in SDA are able to live in safe and secure homes, with a zero tolerance for abuse and neglect.

Carers' aspire for their relatives to be content and safe in a home of their own when their family can no longer provide care. Older parent carers are especially concerned about continuity of support after their death. These aspirations are still far from realised. We trust the Victorian Government will do everything it can to work towards such a basic need
CLA appreciates the work that Carers Victoria has contributed to this paper & hopes the Government takes action.

Carer Support News

Breaking through the glass ceiling
Perseverance, patience = Success
CLA is happy to announce that a support worker will be established with support from the Vic Government. It is proposed to establish a "Carers Place" at the Uniting Church Site in Murray Anderson Rosebud. The worker will be employed initial 2 days a week for 12 months, in the hope we can raise more money to increase the days & extend the contract
The worker will be available to assist carers and people with a disability to prepare for the transition to the NDIS. The role will include assistance and advocacy for families of adults with disabilities, and to identify and liaise with appropriate service and accommodation providers on behalf of those families.

The person will support carers of people with disabilities to navigate the complex disability

support system and get the best outcomes for their sons and daughters through effective, personalised, local information and support, thus improving quality of life for both the carer and the person with a disability

We are very grateful to our consultant Marsha Sheridan who has completed a job description and is supporting CLA to complete a project implementation plan.

Media articles will be placed in local papers and through service organisations to create awareness of both the project and position. We are hoping that the new staff member will be employed in time for Carers week celebrations in Oct.

CLA Carer Statement: <http://communitylifestyleaccommodation.org.au/index.php/links-resources/>

Extract from CLA's submission

Government commitment to ensuring effective and flexible support for carers makes good practical, social and economic sense. We understand that the Carer Statement is just a first step but it is important to highlight the urgency of a genuinely responsive local support network for carers. In the end, a 'Statement' is just words on paper, what we urgently really need is (community building) funding at a regional level and support to achieve an effective, efficient investment in local carer advocacy and support. The Victorian Government will launch the Victorian Carer Statement later this year.

CARERS WEEK 9 OCTOBER CELEBRATION – WILL BE A DAY TO REMEMBER

Recognise & help CLA to celebrate the enormous contribution unpaid carers make in our community. (Create awareness in our community)

CLA is planning something special this year for caring peninsula families at the stunning Morning Star Estate in Mt Eliza, the theme will be Musical Theatre. We are grateful for the support of professional opera singer Lucy Nicolson & Vaughan Wilson is the very talented pianist who will accompany Lucy. Our Patron Judy Barrett is hosting & assisting plan the event. Russell Joseph candidate for Nepean is our MC. Many carers due to their 24/7 caring role cannot get to Melbourne for live shows, CLA is bringing a taste of first class entertainment to Mt Eliza. Be ready for, good

Upcoming Events

Fete & Garage Sale

Saturday 28th October

Sausage sizzle, Raffle prizes & Great Bargains!

Carers Lunch

Monday 9th October

Theme is Musical Theatre. Professional opera singer Lucy Nicolson with Vaughan Wilson the very talented pianist who will accompany Lucy.

food, great entertainment, stunning venue, raffle, door prizes and a few surprises for good luck. Please mark on the calendar and let fellow carers know this is a free event for carers. Our Supporters will only have to pay for cost of their meal. Bookings will be open from September please book early as places will fill fast.

Monash University

A Research evaluation on our Cloverleaf housing project is being undertaken by an honour student Ashley from the OT department of Monash University. Senior lecturer Libby Callaway will be overseeing the research program. This is a bonus for the Cloverleaf story to be recorded, driven by carers for their sons and daughters. The 8 proposed residents and their families will be interviewed before moving in and after to gauge the impact on both the person and their parent/carer.

Thanks to a very generous donation from Maria Holt and donations from business & local individuals we ended the financial year having money to assist our families. Deepest thanks to all who have support CLA to improve the lives of our carers and their loved sons and daughters.

Chair Kevin Turner, Secretary Marie Hell

Chairman	Kevin Turner
Secretary	Marie Hell
Hon Treasurer	Paul Lyons
Director, Lawyer	Rohan Bixler
Director Fundraising	Carole Lowther
Director	Lynette Keogh
Director	Elizabeth Bourke
Volunteer fundraising	Colleen Mackay



Christmas in July

In recent months a most successful Christmas in July was arranged with the wonderful assistance of the fund raising committee, this event helped raise awareness of what we are doing in the Rosebud area and resulted in many people making donations and offering help in the future. Not least we raised over \$3000, a wonderful effort and a most enjoyable day.

Also in July another Bunnings sausage sizzle was held, this was also a big success with over \$850.00 clear profit. It was lovely to see a couple of new faces there helping out, thank you.

There is another sausage sizzle coming up at Bunnings Mornington on Friday 6th October, if anyone can spare a couple of hours to help it would be most appreciated. On Sunday 15th October high tea and silent auction with entertainment by Southern Sounds Chorus will be held at Blue Hills Rise Cranbourne East, all welcome. Thanks to Lynne Keogh for her continuing support and inspiration.

Carole Lowther
Fundraiser



Our gratitude goes out to our sponsors & supporters



Australian Government



Special thanks to the following organisations and people:

Cr Antonella Celi
Meredith Cassidy
James Baldwin
Russell Joseph
Martin Dixon MP
Peninsula Sisters

Judichi Design
Don't Tell Charles
Peninsula Movie Group
The Uniting Church
The Cloverleaf Committee
and our esteemed Patron - Judy Barrett



ACN 147 202 800/ABN 41 147 202 800

Community Lifestyle Accommodation Ltd

Marie Hell
Secretary CLA LTD
PO Box 66
Bittern 3918 Vic 3918
marie.hell@bigpond.com

www.communitylifestyleaccommodation.org.au

NEW MEMBERSHIP FORM

I,
(Full Name of Applicant)

Of
(Address)

Phone: (BH) (AH)
(Mobile)

E-mail:

Wish to become a member of CLA Ltd. In the event of my admission as a member, I agree to be bound by the rules of the Constitution of the Company, for the time being in force and I agree to receive notices from CLA Ltd by e-mail or post.

Members are encouraged to contribute any life skills, hobbies and experience in the disability area that they have to advance the goals of CLA LTD.

.....
(Signature of Applicant)

.....
(Date)

I,
(Name of Proposer)

As a member of CLA Ltd, I nominate the applicant, who is personally known to me, for membership to CLA Ltd

The membership fee of \$10.00 per person/family is enclosed

.....
(Signature of Proposer)

.....
(Date)

Please return this form, your payment and any donation to:
Marie Hell, Secretary
CLA LTD PO Box 66 Bittern Vic. 3919

All donations over \$2.00 are tax deductible and gratefully accepted
ABN 41 147 202 800